



MERIDIAN HOMES

Concierge Level Service for Every Client

We Are Proud To Present:

**7715 Radnor Road
Bethesda, Maryland 20817**





7715 Radnor Road Bethesda, Maryland 20817

Modern Colonial-style with 5 bedrooms, 6.5 baths and 5,048 square-feet of interior space

Under Construction

We are excited to announce that construction is underway on this stunning Modern Colonial-style home, with an anticipated completion date in late 2024. For more details, please [contact us](#) today.

7715 Radnor Road Bethesda, Maryland 20817

Architectural Detail

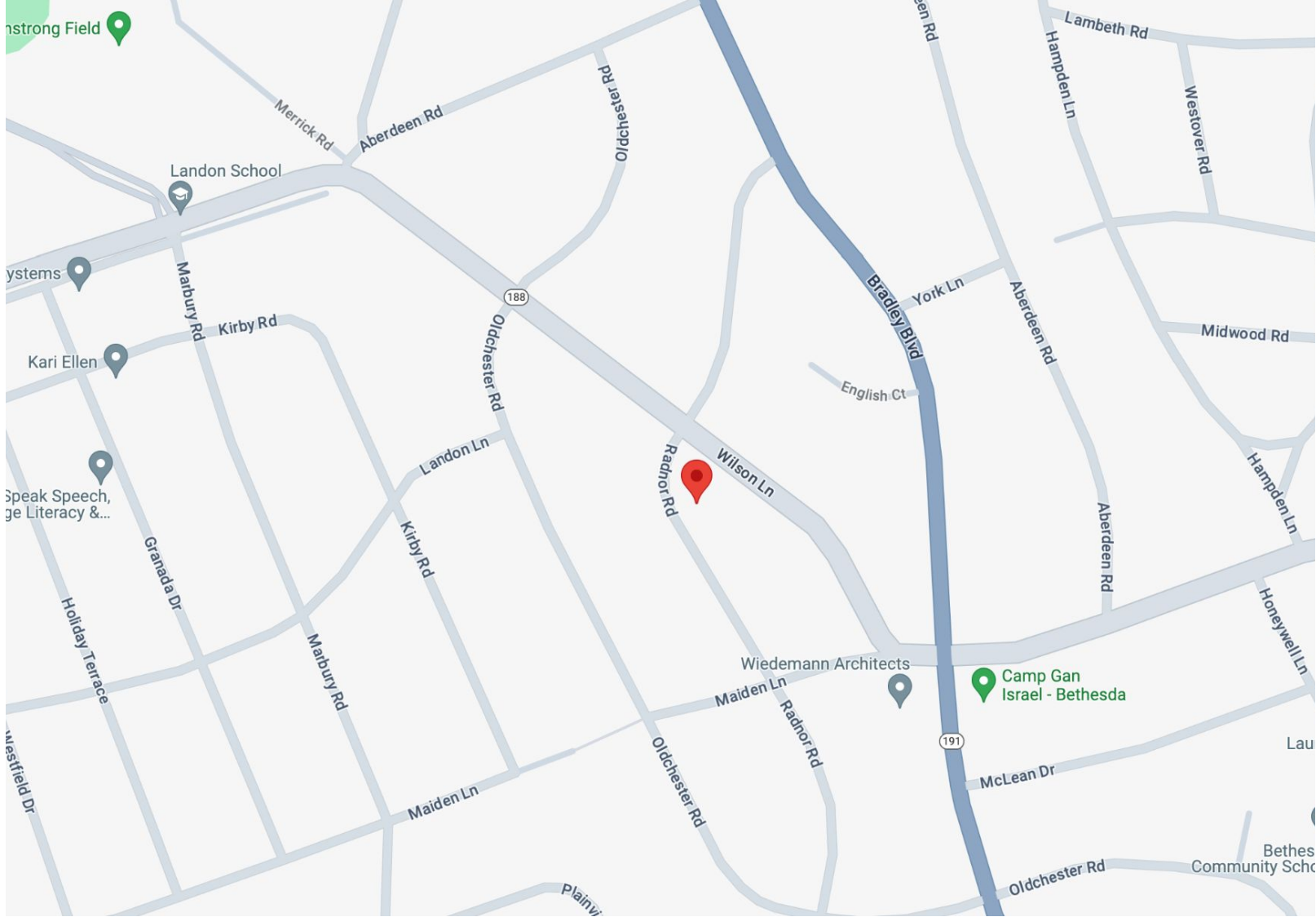
This expansive 5,048 square-foot home will offer 5 bedrooms, 6.5 bathrooms, and 4 finished levels, all accessible via a custom elevator. The main level will feature a gourmet kitchen equipped with high-end Wolf and Sub-Zero appliances and an island with seating. The upper level will include a primary suite with two separate bathrooms for added privacy and comfort. The 4th-floor attic will boast a spacious loft area, ideal for a playroom, study, or exercise room. Oversized windows throughout the home will enhance the Modern Colonial design and flood the space with natural light. The exterior will feature a charming covered flagstone porch at the front and a flagstone terrace at the rear, perfect for entertaining family and friends.

7715 Radnor Road Bethesda, Maryland 20817

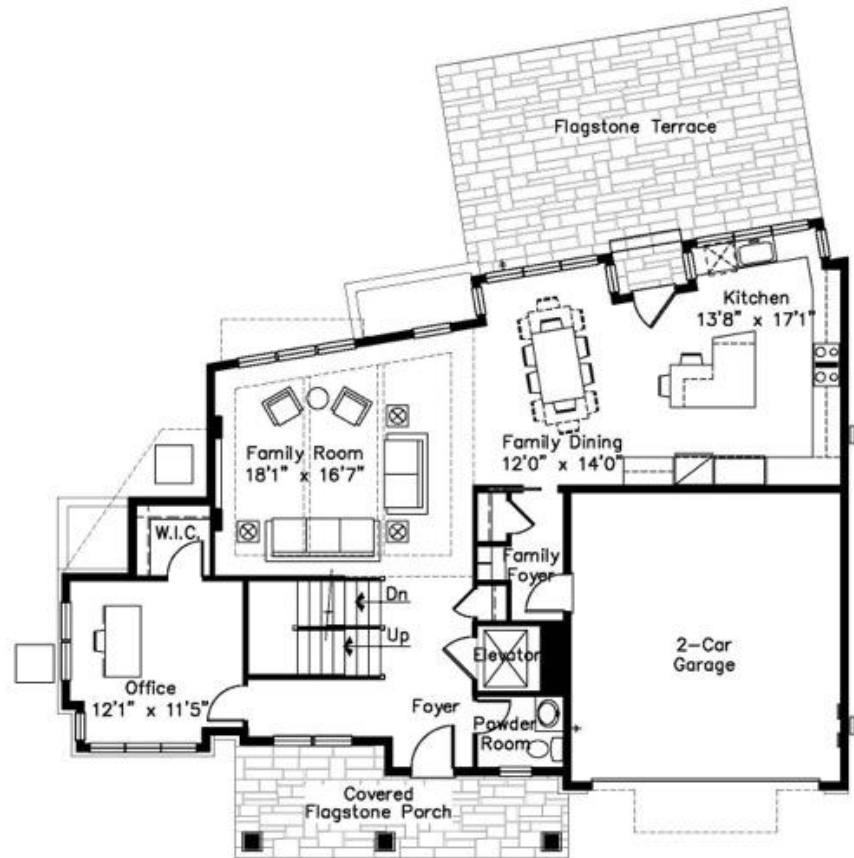
Prime Location

Situated at 7715 Radnor Road in Bethesda, Maryland, this home is located in the highly coveted English Village neighborhood, within the renowned Walt Whitman school district. Upon completion, this brand-new home will be convenient to top-rated public and private schools, downtown Bethesda, the Capital Beltway, and Washington, D.C.

For further details about the location, click on the map on the next page.



[Click Here To View Larger Map >>](#)




Main Level Plan

Note: Plans and specifications subject to change.


Main Level Luxury Features

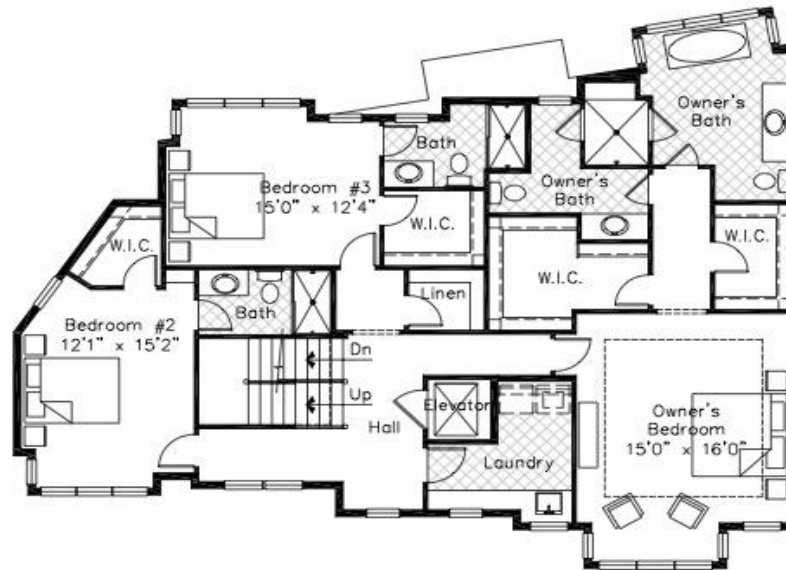
- ◎ **Gourmet Kitchen** – Embrace culinary excellence in a kitchen that boasts a spacious center-island with seating and ceiling-height custom cabinetry with slow-close doors and drawers. Delight in quartz countertops, Sub-Zero and Wolf stainless-steel commercial-grade appliances, and a professional pull-down faucet, all designed for the modern epicurean.
 - ◎ **Family Dining Area** – Perfectly crafted for intimate gatherings yet spacious enough for grand 10-person celebrations, ensuring memorable dining experiences in this lovely space.
 - ◎ **Family Room** – A harmonious open-concept space adorned with a coffered ceiling and a sleek linear fireplace with a contemporary surround, perfect for cozy evenings.
 - ◎ **Rear Patio** – Your ideal retreat for outdoor living and entertaining, featuring exquisite flagstone flooring.
- 

Main Level Luxury Features (continued)...

- ◎ **Study** – A flexible, private space ideal for a quiet home office, complete with a walk-in closet for additional storage.
 - ◎ **Family Foyer** – Enter from the garage into a welcoming space with an oversized closet, built-in cubbies with a bench, and beautiful porcelain flooring.
 - ◎ **Main Foyer** – An elegant entry featuring an elevator, a discreet powder room, and a convenient coat closet.
 - ◎ **Custom Elevator** – Effortlessly move between all levels of the home on a custom 4-stop elevator system.
 - ◎ **Ceiling Height** – Revel in the grandeur of soaring 9-foot-high ceilings throughout the main level.
- 

Main Level Luxury Features (continued)...

- ◎ **Flooring** – Luxuriate in solid oak wide-plank hardwood floors that exude timeless elegance.
 - ◎ **Oversized Two-Car Garage** – Enjoy the convenience of automatic door openers, a dedicated circuit for an electric vehicle charger, and direct access from the family foyer.
 - ◎ **Front Porch** – A spacious and inviting covered porch with flagstone flooring, perfect for relaxing and welcoming guests, graces the front of the home.
- 




Upper Level Plan

Note: Plans and specifications subject to change.

Upper Level Luxury Features

- ◎ **Primary Suite** – Retreat to an expansive primary suite featuring a stunning tray ceiling, a charming seating area at the bay window, dual walk-in closets with built-ins, and sumptuous solid oak wide plank hardwood floors.
- ◎ **2 Separate Spa-Style Primary Baths** – this luxurious retreat includes:
 - Primary Bath 1: Indulge in a freestanding soaking tub, a recessed panel vanity with a lighted vanity mirror, a quartz countertop with an undermount sink bowl, polished chrome faucets and fixtures, an adult-height elongated toilet with a slow-close seat, and elegant porcelain tile flooring.
 - Primary Bath 2: Experience luxury with a recessed panel vanity with a lighted vanity mirror, a quartz countertop with an undermount sink bowl, polished chrome faucets and fixtures, an adult-height elongated toilet with a slow-close seat, and refined porcelain tile flooring.
 - Shared Features of Primary Baths 1 and 2: Both share an oversized shower with a built-in bench and polished chrome faucets and fixtures.

Upper Level Luxury Features (continued)...


- ◎ **2 Additional Bedrooms** – Two additional bedrooms feature upgraded carpeting and walk-in closets with built-in storage, offering comfort and convenience
 - ◎ **2 Ensuite Full Bathrooms** – Each ensuite bathroom is adorned with porcelain tile shower surrounds, decorative mirrors, quartz/quartzite countertops with undermount sink bowls, polished chrome faucets and fixtures, adult-height elongated toilets with slow-close seats, and beautiful porcelain flooring.
 - ◎ **Laundry Area** – A spacious, conveniently located bedroom-level laundry area features porcelain flooring and ample cabinetry.
 - ◎ **Elevator Stop** – Seamless access to all floors with an upper-level stop on the 4-stop elevator system.
 - ◎ **Ceiling Height** – Enjoy the elegance of 9-foot-high ceilings throughout the upper level.
- 




Lower Level Plan

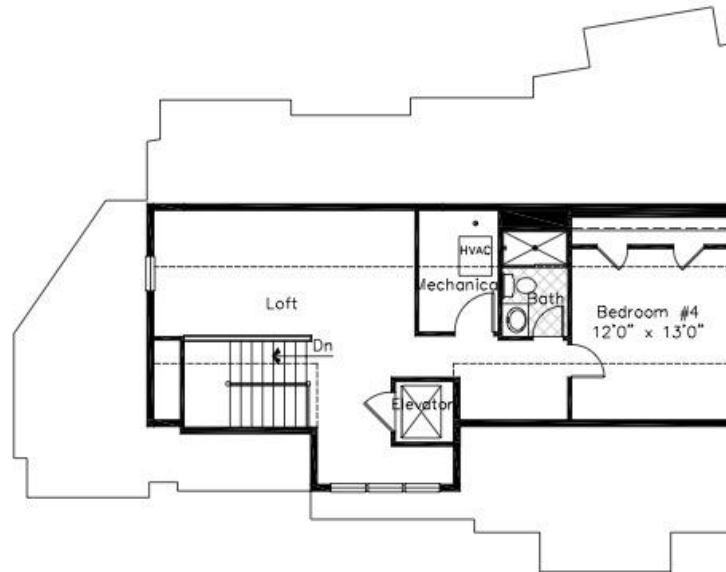
Note: Plans and specifications subject to change.

Lower Level Luxury Features Include...

- ◎ **Recreation Room** – A bright, inviting space with natural light from two full-size windows, ideal for game tables and play centers, creating endless entertainment possibilities.
 - ◎ **Guest/Au Pair Suite** – A comfortable bedroom with natural light, a full-sized window, and a large walk-in closet, perfect for guests or an au pair.
 - ◎ **Full Bathroom** – Featuring porcelain tile tub surround, quartz countertop with undermount sink bowl, decorative mirror, polished chrome faucets and fixtures, adult-height elongated toilet with slow-close seats, and polished porcelain flooring.
 - ◎ **Elevator Stop** – Convenient lower-level stop on the 4-stop elevator system.
- 

Lower Level Luxury Features (continued)...


- ◎ **Ceiling Height** – Experience the spacious feel of 8-foot 9" high ceilings.
 - ◎ **Flooring** – Elegant luxury vinyl plank flooring in the recreation room and upgraded carpet in the bedroom.
- 




Attic Level Plan

Note: Plans and specifications subject to change.

Attic Level Luxury Features

- ◎ **Loft** – A versatile, spacious area perfect for a playroom, extra study, or exercise room, complete with front and side windows for natural light.
 - ◎ **Additional Bedroom** – Includes upgraded carpeting and closets with detailed built-in storage.
 - ◎ **Full Bathroom** – Features a porcelain tile shower surround, quartz countertop with undermount sink bowl, decorative mirror, polished chrome faucets and fixtures, adult-height elongated toilet with slow-close seats, and porcelain flooring.
 - ◎ **Elevator Stop** – Access to the attic-level on the 4-stop elevator system.
 - ◎ **Flooring** – Upgraded carpet in the loft and bedroom areas, adding to the luxurious feel.
- 

Throughout The Home

- ◎ **Custom Elevator** – A state-of-the-art 4-stop system for ultimate convenience.
 - ◎ **Millwork, Trim, and Doors** – Enjoy oversized millwork, window and door casings, base trim, and two-panel solid-core interior doors.
 - ◎ **Stairs and Rails** – Contemporary oak slab stair treads with metal satin black newels and balusters and a sleek oak handrail.
 - ◎ **Lighting** – A generous lighting package with recessed and decorative fixtures, ensuring a well-lit and welcoming atmosphere throughout the home.
 - ◎ **Home Automation** – Pre-wired for television and equipped with multiple USB outlets for modern living.
 - ◎ **Home Safety** – Peace of mind with a fire suppression sprinkler system.
- 


Distinctive Exterior Features

Energy Efficiency and Comfort Throughout

- ◎ **Modern Colonial** – A Modern Colonial-style masterpiece with brick and concrete lap siding, durable exterior trim, 30-year architectural grade roof shingles, standing seam metal roofing, and insulated windows with integral grills.
- ◎ **Foundation** – Durable poured concrete foundation.
- ◎ **Front Porch** – An inviting covered front porch with flagstone flooring, perfect for relaxing and entertaining.
- ◎ **Rear Patio** – A private retreat with flagstone flooring, ideal for outdoor living.
- ◎ **Walkway and Driveway** – Flagstone walkway and a poured concrete driveway with a brushed finish, enhancing the home's curb appeal.
- ◎ **Exterior Lighting and Plumbing** – Front and rear electrical outlets, hose bibs, and rear floodlights for added convenience and safety.
- ◎ **Landscaping** – Professionally designed and maintained landscaping package.


Green/Eco-Friendly Features

Energy Efficiency and Comfort Throughout

- ⊙ **Windows** – EnergyStar low-E argon-filled insulated windows for optimal energy efficiency.
 - ⊙ **Doors** – Energy-efficient solid wood front door with insulated glass, EnergyStar-rated rear door, and insulated metal garage door.
 - ⊙ **Lighting** – Energy-efficient LED lighting and air-sealed recessed lighting housings.
 - ⊙ **Hot Water Heater** – An 80-gallon hybrid electric heat pump water heater for reliable and eco-friendly hot water.
 - ⊙ **HVAC System** – EnergyStar high-efficiency, 2-zone heating and central air conditioning with sealed air ducts.
- 

Green/Eco-Friendly Features (continued)...

Energy Efficiency and Comfort Throughout

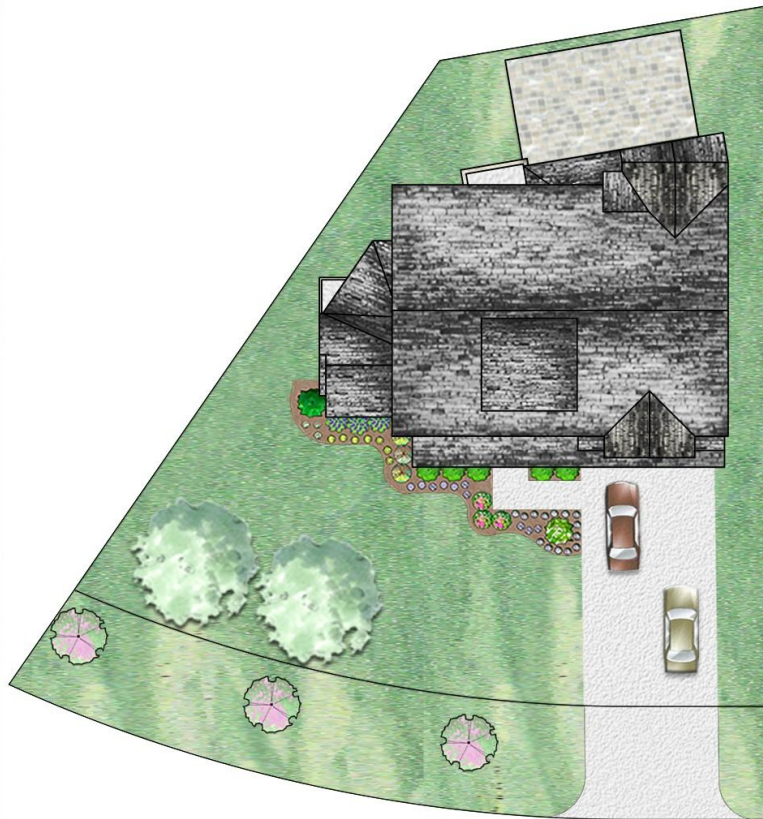
- ◎ **Walls** – Continuous impervious whole-house wrap, energy-efficient 2 x 6-foot exterior walls, and moisture-resistant drywall in all bathrooms and in the laundry room.
 - ◎ **Insulation** – Superior insulation including R-49 in attic areas, R-21 in exterior wood frame walls, R-11 in unfinished basement areas, R-13 in finished basement areas, R-30 in overhangs and garage ceilings, nominal 1" R-6.3 closed cell foam in garage ceiling and band boards, and foam insulation in window frames and penetrations.
- 

Customer Service Coverage Includes...

Warranty and Inspections

- ◎ **Warranty and Inspections** – Comprehensive builder's warranty, pre-settlement inspection, and an 11-month inspection to ensure your satisfaction.

Note: Prices and standard features subject to change without notice.



7715 RADNOR ROAD

BETHESDA MARYLAND 20817

Lot Size 6,705 sq. ft.

Note: All plans are approximate, subject to change, and are the artist's conception only.

MONTGOMERY COUNTY PUBLIC SCHOOL ASSIGNMENTS

- ⊙ [Bradley Hills Elementary School](#)
- ⊙ [Thomas W. Pyle Middle School](#)
- ⊙ [Walt Whitman High School](#)

*The school information above is not guaranteed as boundaries can change.

Please check with [MCPS](#) to confirm all school assignments.



MERIDIAN HOMES

Concierge Level Service for Every Client

www.meridianhomesinc.com

For more information
contact us by calling

301.652.4440

or email

info@meridianhomesinc.com

